

Eclipse BoostPak

Packaged Gas Booster Systems

Series MX
Version 2

Medium Flow Duplex with Heat Exchanger Option

Parameter	Specification						
	MX3314	MX3412	MX4414	MX4617	MX4619	MX4623	MX4628
Model Number	MX3314	MX3412	MX4414	MX4617	MX4619	MX4623	MX4628
Assembly Number	10024910	10024911	10024912	10024913	10024914	10024915	10024916
Booster	HB3314-1/2	HB3412-1/2	HB4414-1	HB4617-1	HB4619-2	HB4623-5	HB4628-5
Minimum Flow (cfh)^a	50	150	150	150	150	300	150
Maximum Flow (cfh)^a	5,300	11,600	20,400	23,000	17,800	33,000	14,600
Pressure Boost ("w.c.)^a	9	7	7	13	18	26	34
Turndown	106:1	77:1	136:1	150:1	120:1	110:1	100:1
Primary Voltage	b, c, d, e	b, c, d, e	c, d	c, d	c, d	c, d	c, d
Motor Horsepower	1/2	1/2	1	1	2	5	5
Approximate Wt. (lbs)^f	1,800	1,900	2,100	2,600	2,800	3,300	3,500

Notes: **a** Ratings are nominal, in CFH of natural gas, at standard conditions and depend on customer interface piping.
b 115/230 VAC, 1 Φ , 60 Hz
c 230/460 VAC, 3 Φ , 60 Hz
d 208 VAC, 3 Φ , 60 Hz
e 208 VAC, 1 Φ , 60 Hz
f Weight is approximate.
 NEMA 4 rating; NEMA 7 rating option available (footprint increases with this option).

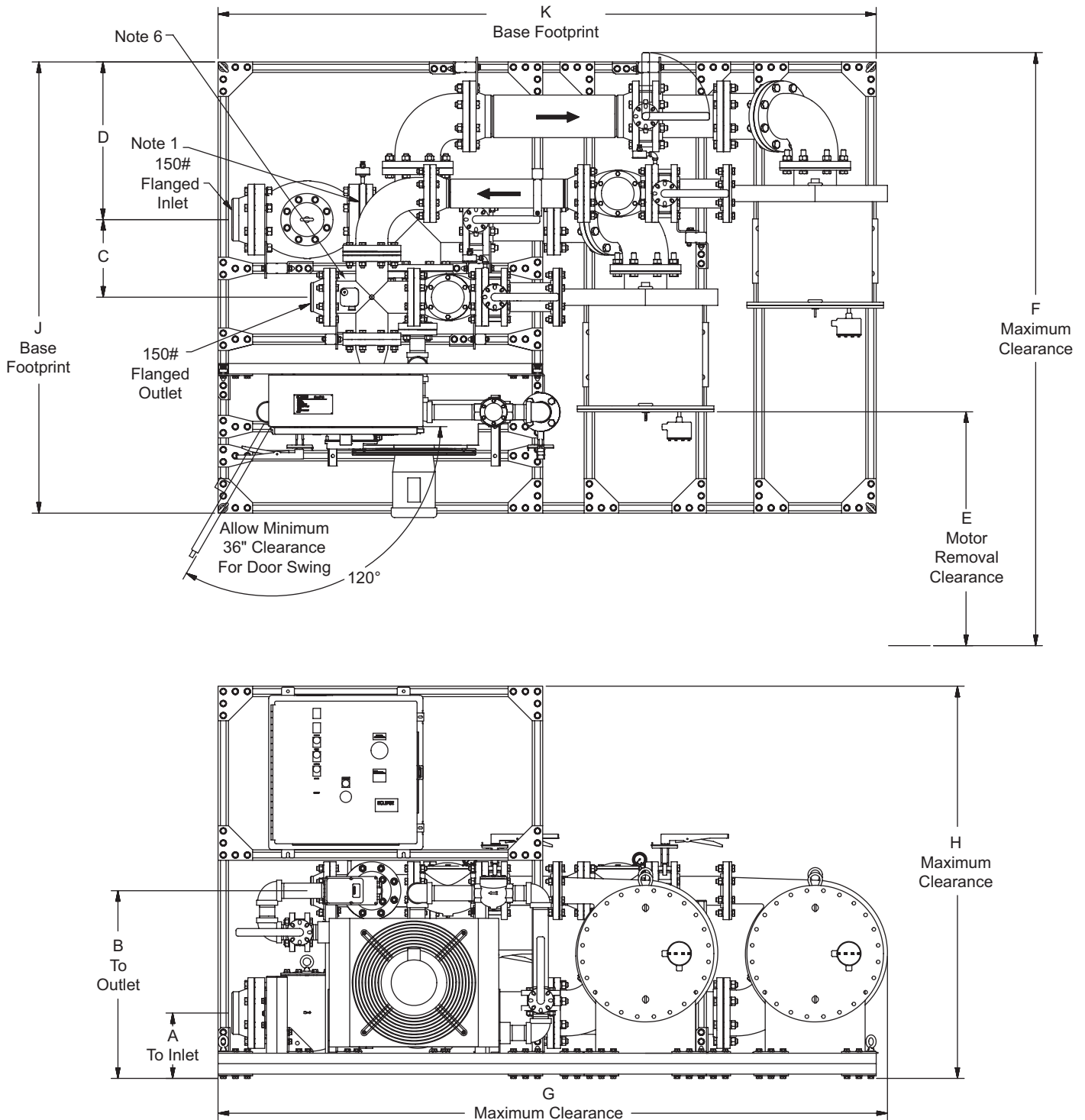
Dimensional Information in Millimeters (in)

BoostPak	Flange Sizes (150#)		Connection Data			
	Inlet	Outlet	A	B	C	D
MX3314	3	3	348 (13.7)	672 (26.5)	166 (6.5)	482 (19.0)
MX3412	4	3	240 (9.5)	612 (24.1)	229 (9.0)	526 (20.7)
MX4414	4	4	278 (11.0)	672 (26.5)	203 (8.0)	524 (20.6)
MX4617	6	4	259 (10.2)	743 (29.2)	307 (12.1)	623 (24.5)
MX4619	6	4	348 (13.7)	881 (34.7)	306 (12.0)	591 (23.3)
MX4623	6	4	373 (14.7)	954 (37.6)	322 (12.7)	594 (23.4)
MX4628	6	4	450 (17.7)	1113 (43.8)	316 (12.4)	594 (23.4)

BoostPak	Maximum Envelope					
	E	F	G	H	J	K
MX3314	737 (29)	1879 (74.7)	2142 (84.3)	1600 (63)	1583 (62.3)	2050 (80.7)
MX3412	762 (30)	2047 (80.6)	2152 (84.7)	1600 (63)	1683 (66.2)	2050 (80.7)
MX4414	762 (30)	2007 (79.0)	2268 (89.3)	1600 (63)	1683 (66.2)	2180 (85.8)
MX4617	762 (30)	2181 (85.9)	2644 (104.1)	1550 (61)	1783 (70.2)	2600 (102.4)
MX4619	711 (28)	2092 (82.3)	2688 (105.8)	1700 (66.9)	1733 (68.2)	2600 (102.4)
MX4623	889 (35)	2435 (95.8)	3065 (120.7)	1750 (68.9)	1783 (70.2)	3000 (118.1)
MX4628	965 (38)	2570 (101.2)	3069 (120.8)	1900 (74.8)	1733 (68.2)	3000 (118.1)

Notes: Dimensions shown are nominal. Variations of 2% may occur due to thread engagement and assembly tolerances.

Dimensions in Millimeters (inches)
Medium Flow Duplex with Heat Exchanger Option



- Note 1* Pressure Switch Kit location when factory mounted.
- Note 2* When Pressure Switch Kit is supplied loose by Eclipse, it is to be installed by customer in accordance with local codes.
- Note 3* Customer is to secure Boostpak to foundation through unistrut base (customer drilled holes).
- Note 4* Dimensions shown are nominal. Variations of 2% may occur due to thread engagement and assembly tolerances.
- Note 5* Ensure proper clearances for motor removal.
- Note 6* Flow control kit location, when factory mounted.



Offered By:

Power Equipment Company
2011 Williamsburg Road
Richmond, Virginia 23231
Phone (804) 236-3800
Fax (804) 236-3882

www.peconet.com